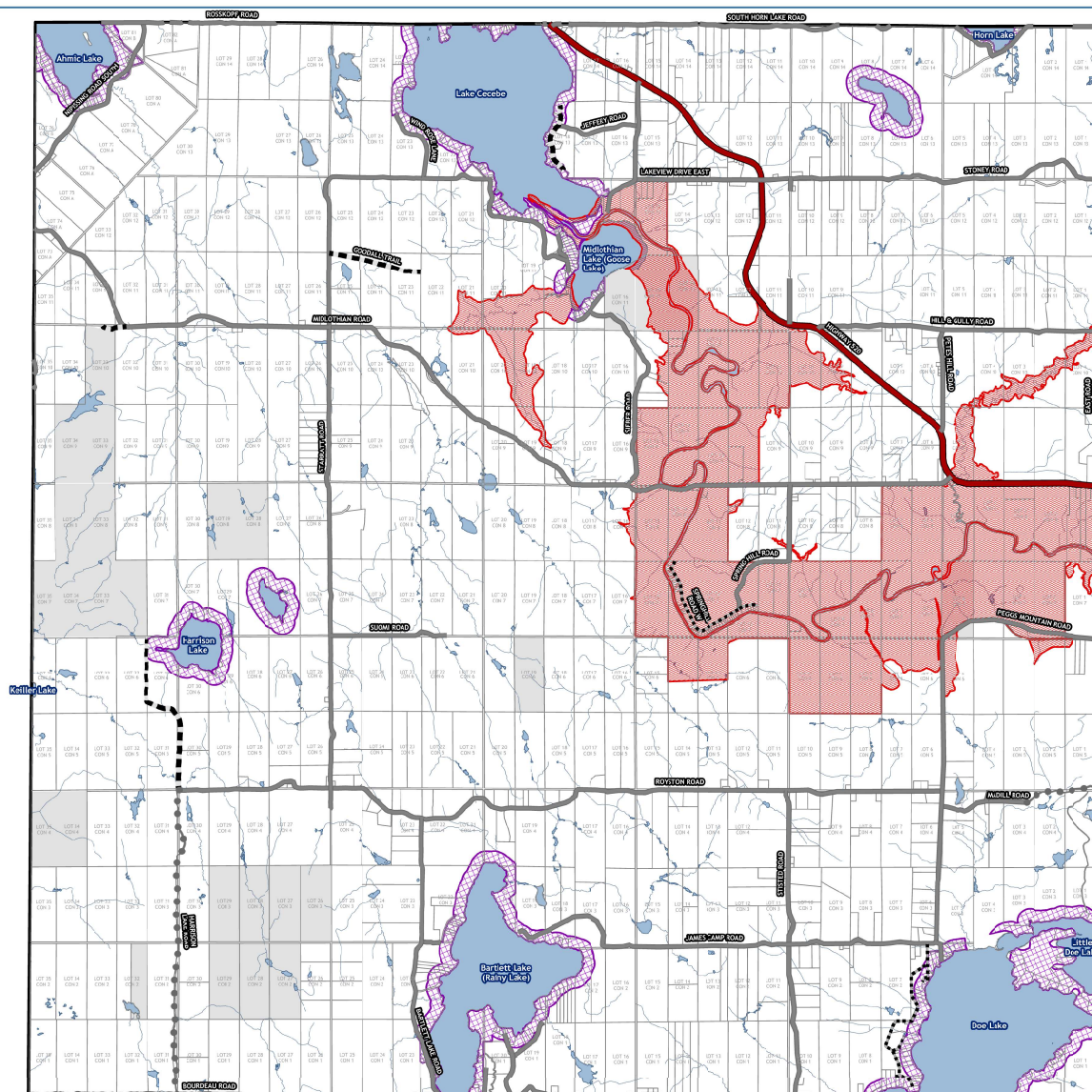





TOWNSHIP OF RYERSON




DRAFT V1
FEBRUARY 2026

LAND USE DESIGNATIONS - SCHEDULE 'A'



LAND USE DESIGNATION

-  RURAL
 SHORELINE DESIGNATION
 MAGNETAWAN RIVER DEVELOPMENT AREA (Refer to Section 6.1.3)

-  PARCEL FABRIC
 WATERCOURSES
 WATERBODIES
 CROWN LAND

TRANSPORTATION SYSTEM

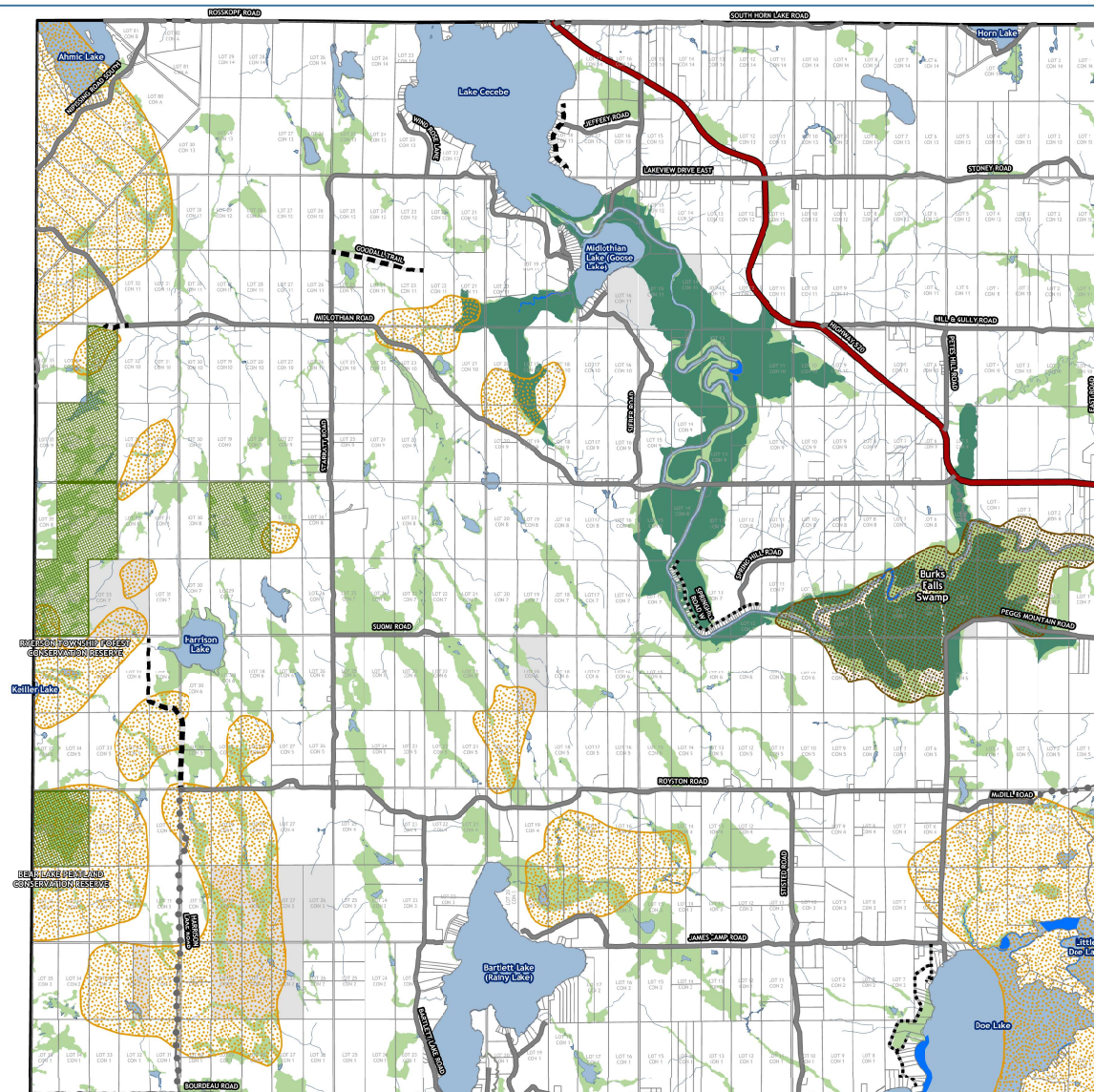
-  PROVINCIAL HIGHWAY
 MUNICIPAL YEAR ROUND MAINTAINED
 MUNICIPAL SEASONAL MAINTAINED
 UNMAINTAINED ROAD
 PRIVATE ROADS



This map is for illustration purposes only. The information displayed on this map has been created from Ministry of Natural Resources, Ontario Base Mapping® (MNR, Property Fabric). While every effort has been made to accurately depict the information, this map should not be relied on as a precise indicator of locations of features or roads.

Base Mapping Source:
Ministry of Natural Resources and Forestry - Ontario Geohub
Municipal Property Assessment Corporation





NATURAL FEATURES

- PROVINCIAL WETLAND - EVALUATED
- WETLAND - NOT EVALUATED per OWES
- CANDIDATE ANSI - LIFE SCIENCE
- CONSERVATION RESERVES
- DEER WINTERING - STRATUM 2
- FISH SPAWNING AREAS

- PARCEL FABRIC
- WATERCOURSES
- WATERBODIES
- CROWN LAND

TRANSPORTATION SYSTEM

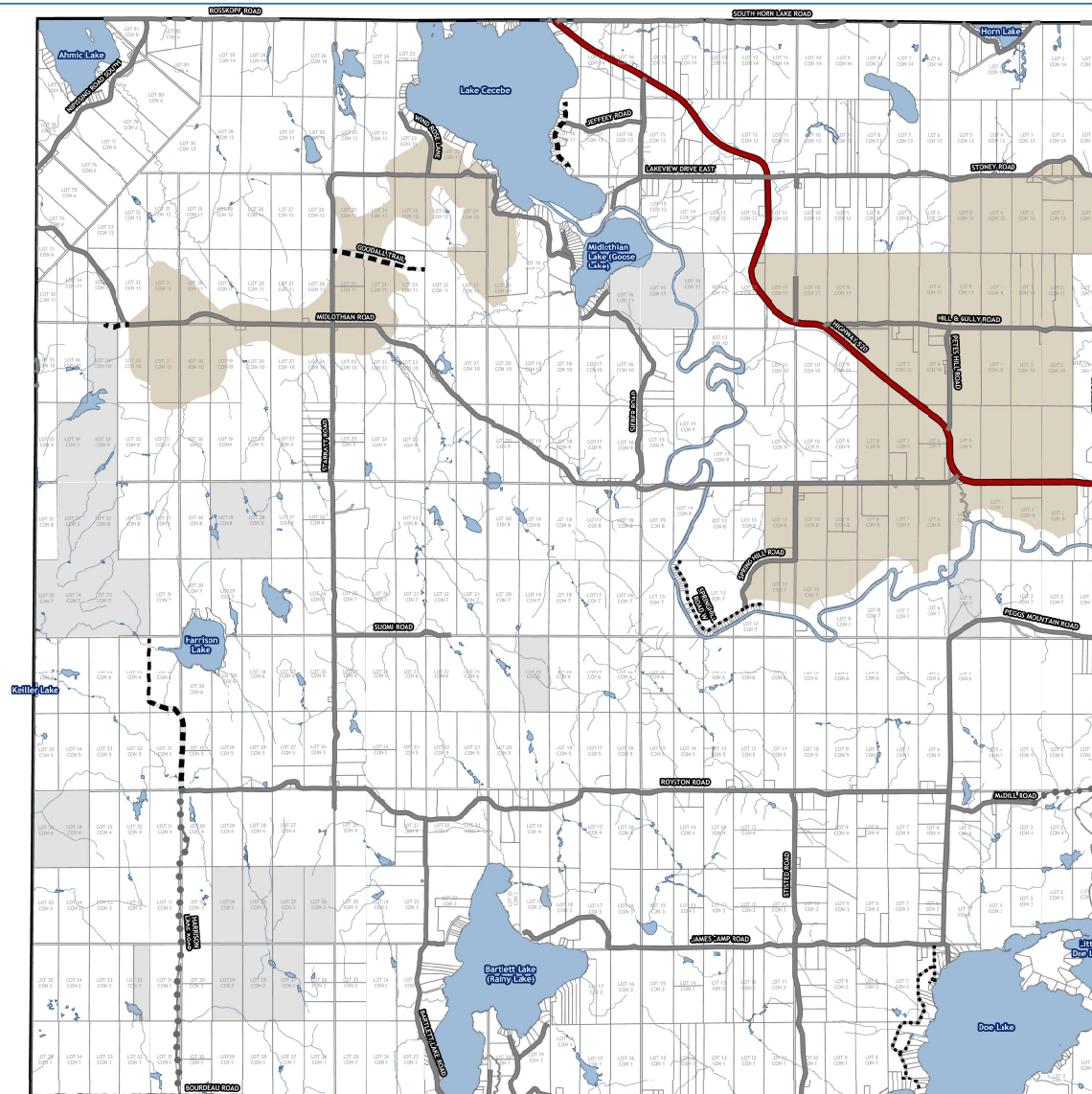
- PROVINCIAL HIGHWAY
- MUNICIPAL YEAR ROUND MAINTAINED
- MUNICIPAL SEASONAL MAINTAINED
- UNMAINTAINED ROAD
- PRIVATE ROADS



This map is for illustration purposes only. The information displayed on this map has been created from Ministry of Natural Resources, Ontario base mapping, and other data. While every effort has been made to accurately depict the information, this map should not be relied on as a pre-condition of locations of features or roads.

Base Mapping Sources:
Ministry of Natural Resources and Forestry - Ontario Geospatial
Municipal Property Assessment Corporation





AGRICULTURAL OVERLAY

- PARCEL FABRIC
- WATERCOURSES
- WATERBODIES
- CROWN LAND

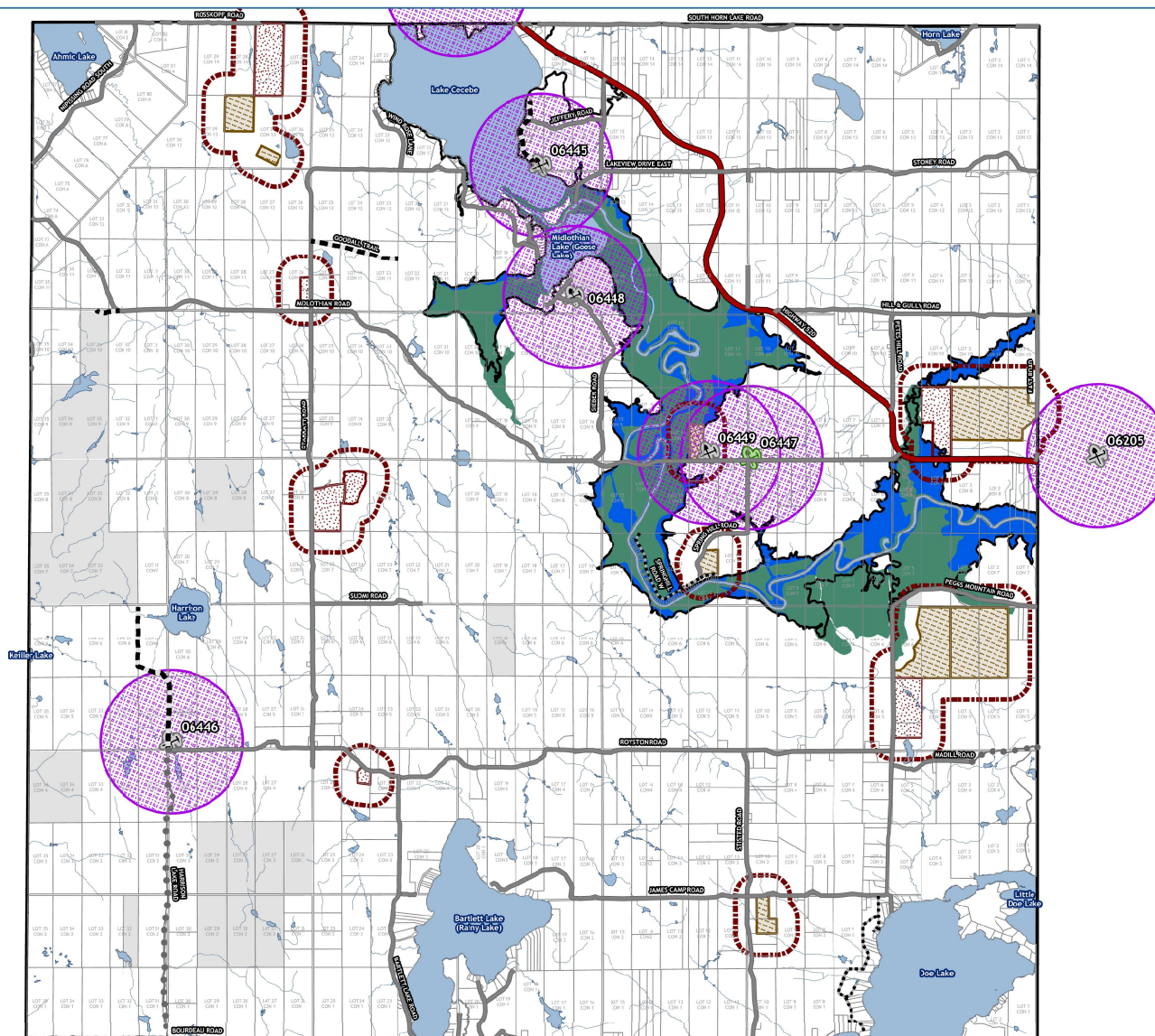
- TRANSPORTATION SYSTEM**
- PROVINCIAL HIGHWAY
 - MUNICIPAL YEAR ROUND MAINTAINED
 - MUNICIPAL SEASONAL MAINTAINED
 - UNMAINTAINED ROAD
 - PRIVATE ROADS

1:000 0 1:000 2:000 Metres

This map is for illustration purposes only. The information displayed on this map has been created from Ministry of Natural Resources, Ontario base mapping, and other data sources. While every effort has been made to accurately depict the information, this map should not be relied on as a pre-indicator of locations of features or roads.

Base Mapping Sources:
Ministry of Natural Resources and Forestry - Ontario Geospatial
Municipal Property Assessment Corporation

PLANScape
BUILDING COMMUNITY THROUGH PLANNING



DEVELOPMENT CONSTRAINTS

- ABANDONED MINES
- PRODUCING MINE
- AMIS LOCATION 1000m BUFFER

AGGREGATE CONSTRAINTS

- LICENSED PIT & QUARRY
- LICENSED PIT
- LICENSED QUARRY
- 300m LAND USE COMPATIBILITY ASSESSMENT AREA

- MAGNETAWAN RIVER FLOODPLAIN
- MAGNETAWAN RIVER PROVINCIALLY SIGNIFICANT WETLAND
- 285M CONTOUR
- PARCEL FABRIC
- WATERCOURSES
- WATERBODIES
- CROWN LAND

TRANSPORTATION SYSTEM

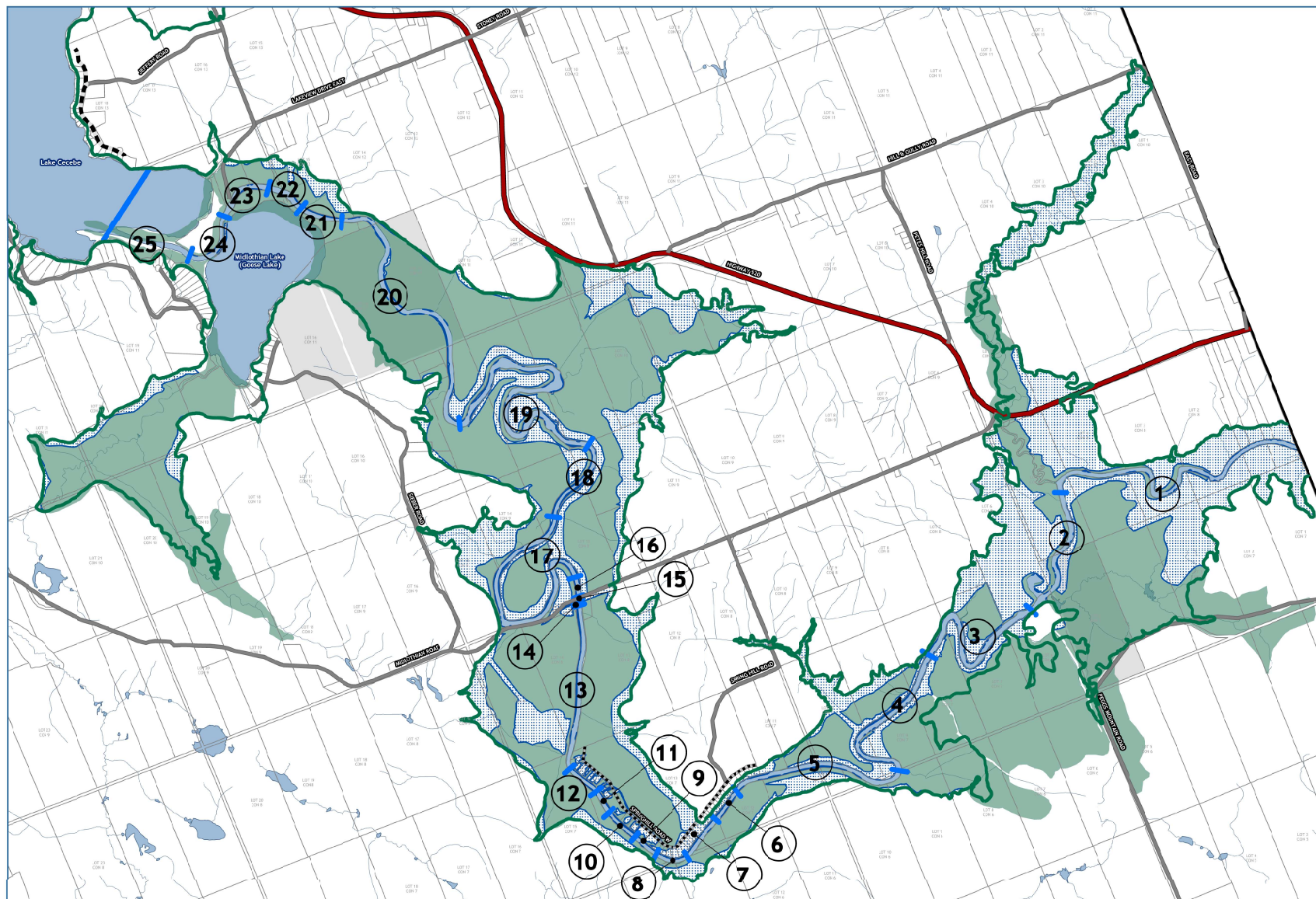
- PROVINCIAL HIGHWAY
- MUNICIPAL YEAR ROUND MAINTAINED
- MUNICIPAL SEASONAL MAINTAINED
- UNMAINTAINED ROAD
- PRIVATE ROADS



This map is for illustration purposes only. The information displayed on this map has been created from Ministry of Natural Resources, Ontario base Mapping, AMIS, Property Fabric, while every effort has been made to accurately depict the information, this map should not be relied on as a pre-indicator of locations of features or risks.

Base Mapping Sources:
Ministry of Natural Resources and Forestry - Ontario Geobase
Municipal Property Assessment Corporation
Abandoned Mines Information System - Aggregate Resources

PLANScape
BUILDING COMMUNITY THROUGH PLANNING



- 285M CONTOUR
- 1 SEGMENT # AS PER APPENDIX 1 & 2
- CROSS SECTION LOCATION
- MAGNETAWAN RIVER PROVINCIAL SIGNIFICANT WETLAND
- MAGNETAWAN RIVER FLOODPLAIN

- PARCEL FABRIC
- WATERCOURSES
- WATERBODIES
- CROWN LAND

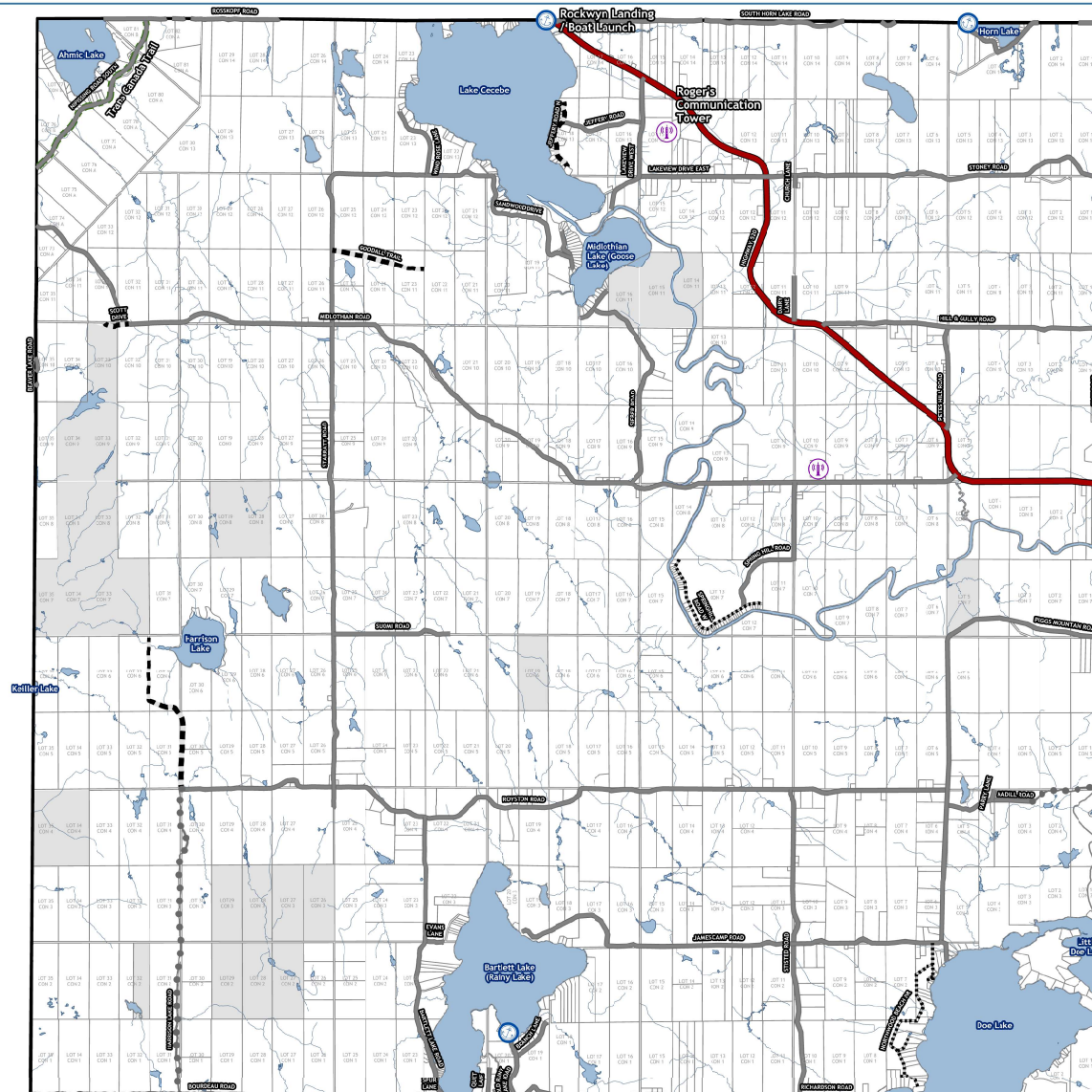
- TRANSPORTATION SYSTEM**
- PROVINCIAL HIGHWAY
 - MUNICIPAL YEAR ROUND MAINTAINED
 - MUNICIPAL SEASONAL MAINTAINED
 - UNMAINTAINED ROAD
 - PRIVATE ROADS



This map is for illustration purposes only. The information displayed on this map has been created from Ministry of Natural Resources, Ontario base Mapping, and Property Fabric. While every effort has been made to accurately depict the information, this map should not be relied on as a pre-determination of locations of features or roads.

Base Mapping Sources:
Ministry of Natural Resources and Forestry - Ontario Geobase
Municipal Property Assessment Corporation
Abandoned Wires Information System - Aggregate Resources

PLANScape
BUILDING COMMUNITY THROUGH PLANNING



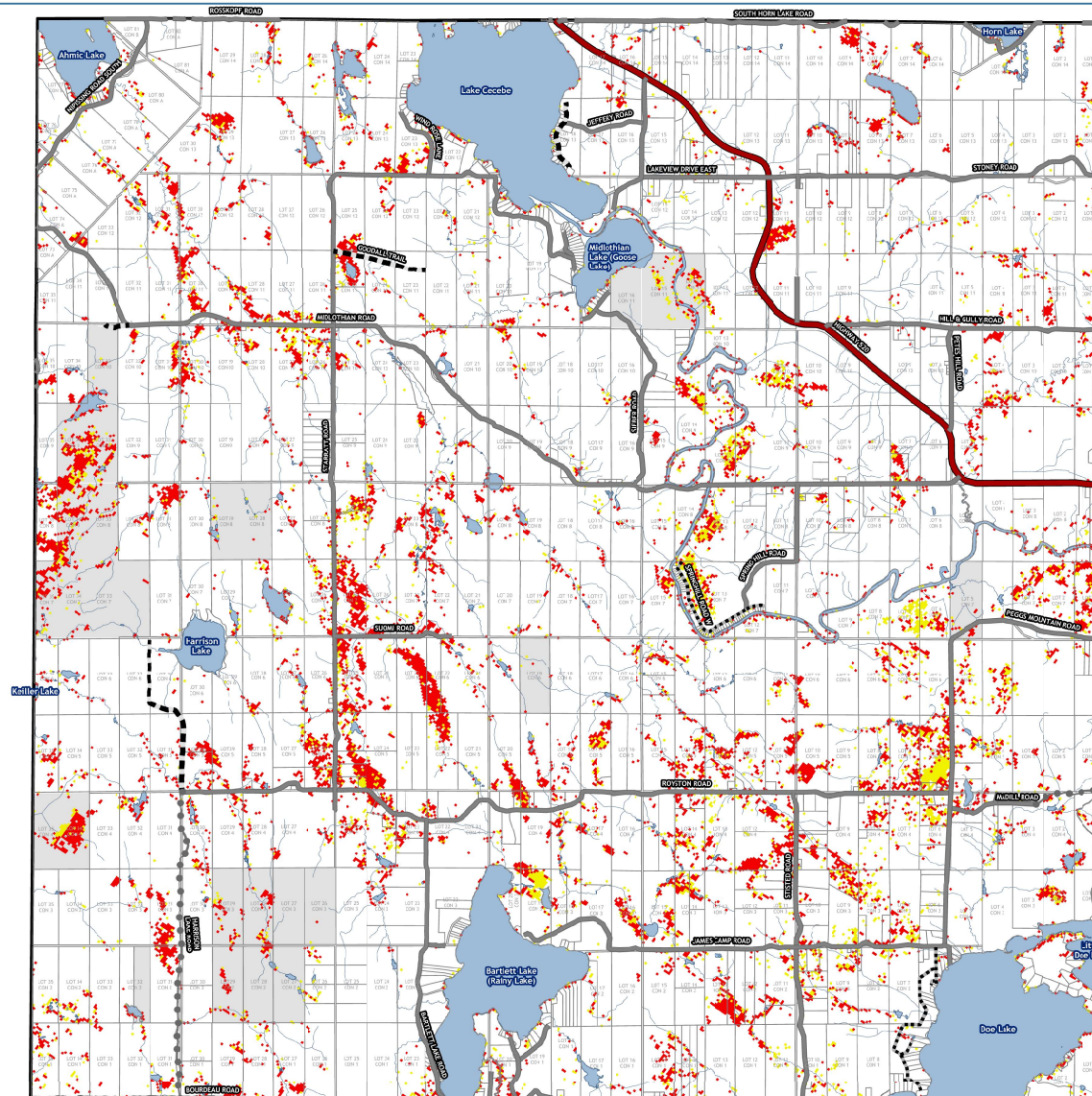
- TRANSPORTATION SYSTEM**
- PROVINCIAL HIGHWAY
 - MUNICIPAL YEAR ROUND MAINTAINED
 - - - MUNICIPAL SEASONAL MAINTAINED
 - . . . UNMAINTAINED ROAD
 - PRIVATE ROADS
 - - - TRANS CANADA TRAIL
- EXISTING ACCESS POINTS**
- B BOAT LAUNCH
- INFRASTRUCTURE**
- T COMMUNICATION TOWER
- PARCEL FABRIC**
- PARCEL FABRIC
 - WATERCOURSES
 - WATERBODIES
 - CRCWN LAND

1,000 0 1,000 2,000 Metres

This map is for illustration purposes only. The information displayed on this map has been created from Ministry of Natural Resources, Ontario base mapping, and other sources. While every effort has been made to accurately depict the information, this map should not be relied on as a pre-estimate of locations of features or roads.

Base Mapping Sources:
 Ministry of Natural Resources and Forestry - Ontario Geospatial
 Municipal Property Assessment Corporation

PLANScape
 BUILDING COMMUNITY THROUGH PLANNING



WILDLAND FIRE - MNR CURRENT TO 2024

- EXTREME
- HIGH

- PARCEL FABRIC
- WATERCOURSES
- WATERBODIES
- CROWN LAND

- #### TRANSPORTATION SYSTEM
- PROVINCIAL HIGHWAY
 - MUNICIPAL YEAR ROUND MAINTAINED
 - MUNICIPAL SEASONAL MAINTAINED
 - UNMAINTAINED ROAD
 - PRIVATE ROADS

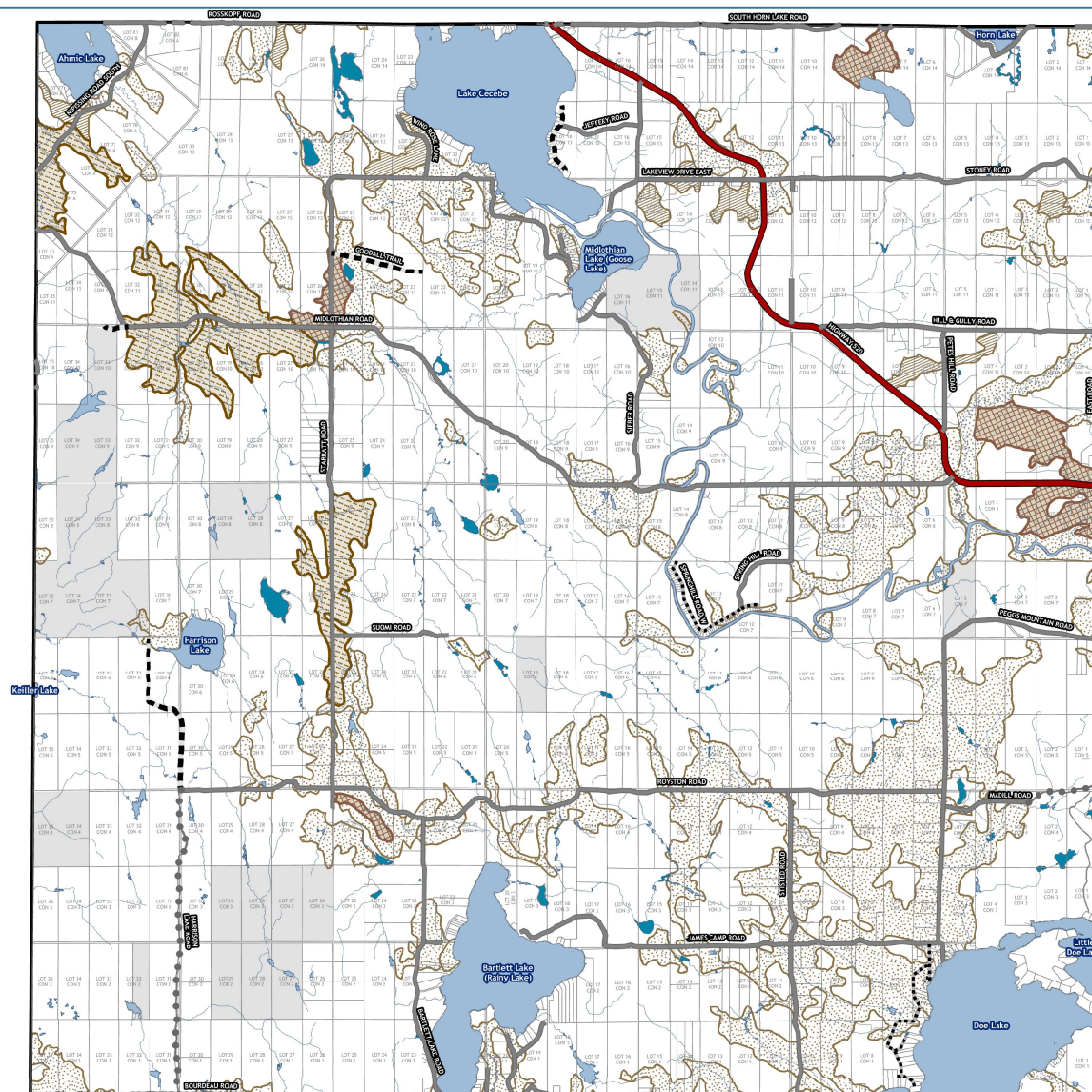


This map is for illustration purposes only. The information displayed on this map has been created from Ministry of Natural Resources, Ontario base Mapping, MNR Property Fabric, while every effort has been made to accurately depict the information, this map should not be relied on as a pre-indicator of locations of features or risks.

Base Mapping Sources:
Ministry of Natural Resources and Forestry - Ontario Geohub
Municipal Property Assessment Corporation
Fire - Potential Hazardous Forest Types for Wildland Fire - Ontario Geohub



Fire - Potential Hazardous Forest Types for Wildland Fire
| Ontario Geohub
Data is Updated Annually
Information Provided is for Reference Only
Wildland Fire Data Information may be updated
and done so without an Official Plan Amendment.

RESOURCES -
ONTARIO GEOLOGICAL SURVEY

SAND - SECONDARY
GRAVEL - SECONDARY

SAND - TERTIARY
GRAVEL - TERTIARY

PARCEL FABRIC
WATERCOURSES
WATERBODIES
CROWN LAND

TRANSPORTATION SYSTEM

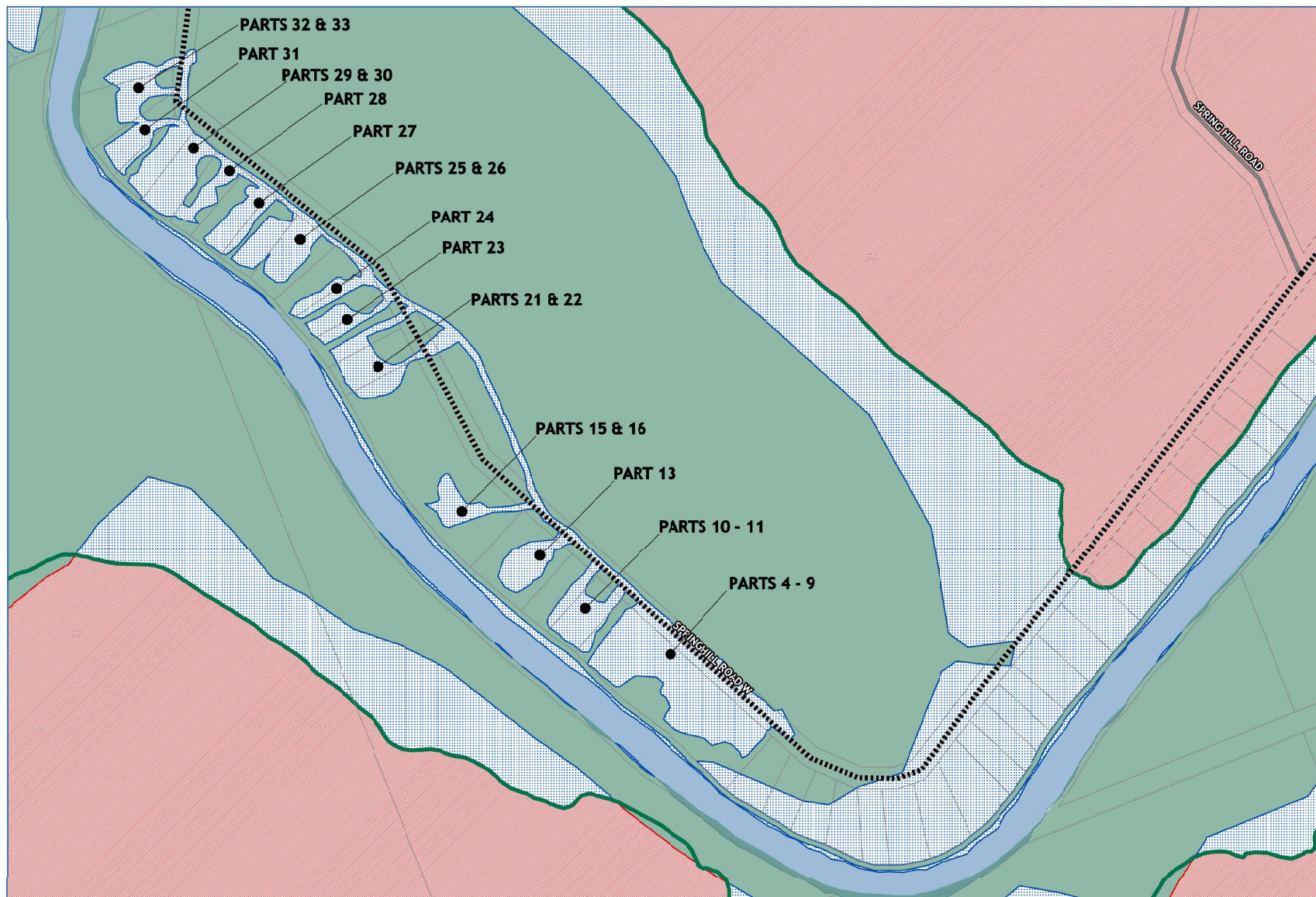
PROVINCIAL HIGHWAY
MUNICIPAL YEAR ROUND MAINTAINED
MUNICIPAL SEASONAL MAINTAINED
UNMAINTAINED ROAD
PRIVATE ROADS



This map is for illustration purposes only. The information displayed on this map has been created from Ministry of Natural Resources, Ontario base Mapping, and Property Fabric. While every effort has been made to accurately depict the information, this map should not be relied on as a pre-indicator of locations of features or roads.

Base Mapping Sources:
Ministry of Natural Resources and Forestry - Ontario Geobase
Municipal Property Assessment Corporation
Aggregate Sources of Ontario - Geology Ontario

PLANScape
BUILDING COMMUNITY THROUGH PLANNING



LAND USE

- MAGNETAWAN RIVER FLOODPLAIN
- MAGNETAWAN RIVER PROVINCIAL SIGNIFICANT WETLAND
- MAGNETAWAN RIVER DEVELOPMENT AREA

285M CONTOUR

PARCEL FABRIC

WATERCOURSES

WATERBODIES

CROWN LAND

TRANSPORTATION SYSTEM

PROVINCIAL HIGHWAY

MUNICIPAL YEAR ROUND MAINTAINED

MUNICIPAL SEASONAL MAINTAINED

UNMAINTAINED ROAD

PRIVATE ROADS



This map is for illustration purposes only. The information displayed on this map has been created from Ministry of Natural Resources, Ontario base Mapping, MRNC Property Fabric, while every effort has been made to accurately depict the information, this map should not be relied on as a pre-indicator of locations or maps.

Base Mapping Sources:
Ministry of Natural Resources and Forestry - Ontario Geobase
Municipal Property Assessment Corporation
Abandoned Mines Information System - Aggregate Resources

